

SHOCK-WAVE



WATER CANNON



BLASTS UP
TO 30M



QUICK
SETUP



FAST
RECHARGE



ECO-
FRIENDLY

INTRODUCING SHOCK-WAVE

SHOCK-WAVE produces a powerful effect in one big blast. Engineered to shoot water an impressive 25-30 metres in the air, this high-powered jet guarantees to be a crowd-pleaser. Ideal for stadium productions, large festivals, and themed attractions.



Adjustable Firing Angle

Portable and versatile, the SHOCK-WAVE is engineered to energise crowds with its dynamic water display. The water cannon offers an eco-friendly alternative to traditional confetti or CO₂ burst effects, requiring only water. Its sleek, modern design integrates seamlessly with any stage setup, ideal for showcasing the sudden impact of SHOCK-WAVE.

FEATURES

- Powerful water projection up to approx. 30 metres
- Compressed air mortar with optional compressor integration
- Adjustable firing angle for various types of stage productions
- Portable structure for simple transportation
- Easy-to-refill tube and built-in water filter
- Simple mains or DC voltage firing system



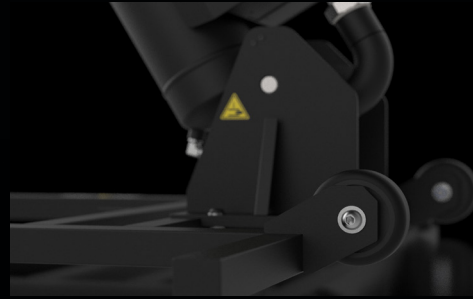
INSPIRATION

SHOCK-WAVE is the ultimate special effect for large events and immersive attractions. The water cannon offers a truly unique sensory experience for audiences. Perfectly synchronised eruptions from multiple units creates a huge effect that can elevate an entire event.

Whether enhancing a high-energy festival, adding drama to a concert, or immersing audiences in a themed event, SHOCK-WAVE is your go-to solution for unforgettable SFX.



Portable Design



ACCESSORIES

Designed for minimal maintenance, SHOCK-WAVE can be supplied with additional options to ensure smooth operation:

- Water treatment chemicals to maintain system efficiency
- External tank with pump, filtration, and fill hoses
- Nitrogen fill kit, with regulator and high pressure hoses
- Remote compressor and air hoses
- Mortar cleaning kit for long-term care and reliability
- Flight case systems for secure and easy transportation



Blasts up to 30m



SPECIFICATION

DIMENSIONS AT 60° 1240 mm (L) × 1000 mm (W) × 1340 mm (H)

DIMENSIONS STOWED 1450 mm (L) × 1000 mm (W) × 425 mm (H)

EMPTY WEIGHT 55kg

FULL WEIGHT 71kg

CANNON VOLUME 16 Litres

Voltage available in 230vac & 110vac

INPUTS Low voltage upon request

Compressed Air/Nitrogen - 16BAR

Steel Frame

CONSTRUCTION Stainless steel seamless mortar tube

Powdercoat surface finish

Adjustable firing angle 40° - 60°

Built-in castors

Manual drain

FEATURES

Pressure gauge

Safety relief valve

Built-in water filter

True1 powerCON

CONNECTIONS 1" QRC water connection

1/4" ISOA gas connection

*Specifications are approximate.

CONTACT US

+44 (0) 1392 241225

sales@luminous-showtech.com

www.luminous-showtech.com

Unit 14, Apple Lane, Exeter, EX2 5GL, UK

